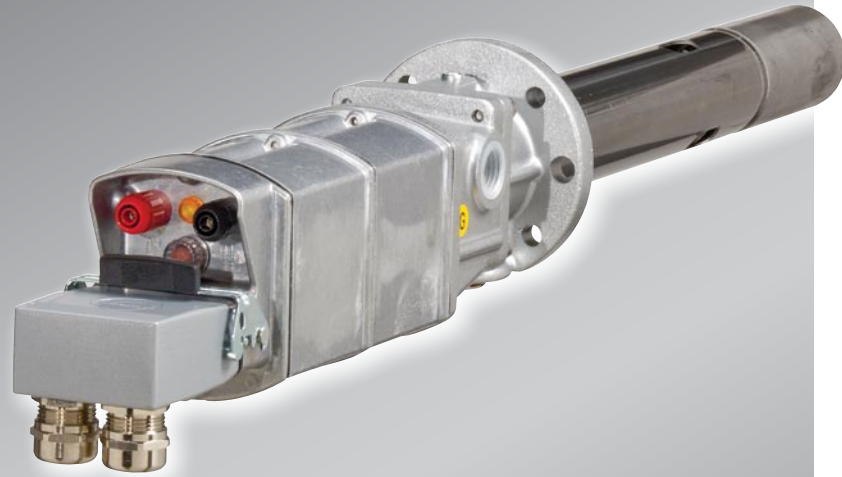




## ZSTAR™ – An Innovation In Pilot Technology



### FEATURES AND BENEFITS

- Flame supervision via ionization electrode
- Ignition and ionization modules are fully integrated into the compact unit
- Available in NEMA-4 or NEMA-7 designs
- No external boxes or housings required
- High voltage cable not required
- Rugged, low maintenance, modular design
- 110v and 220v power options available

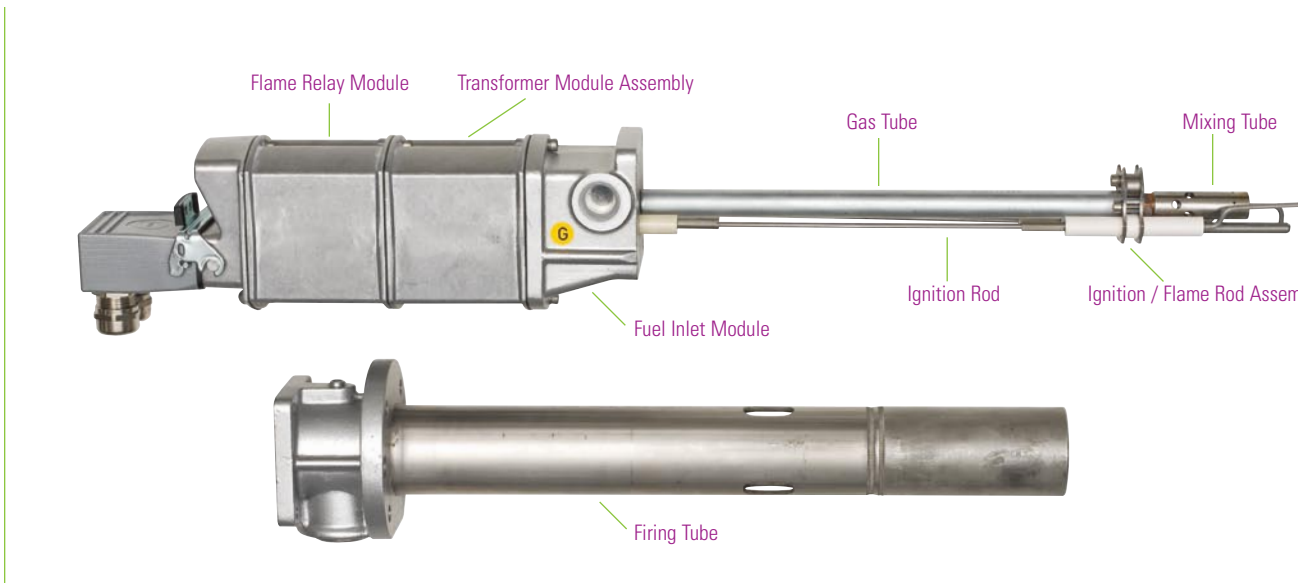
### EFFICIENT. EFFECTIVE. RELIABLE.

John Zink is the global leader in developing state-of-the-art combustion technologies and environmental solutions. We understand that keeping your combustion system online is vital to the success and safety of your operation. That's why we developed Z-Star™ - an innovative pilot designed to deliver exceptional performance and reliable operation.

**THE Z-STAR PILOT IS ENGINEERED** with the flame detection method and the transformer built directly into the unit. The advantage? Fewer wires and easier installation.

**THE Z-STAR PILOT CAN BE USED** in most standard pilot applications. Ignition and ionization modules are mounted in the pilot assembly guaranteeing electromagnetic compatibility and no lost signal strength for remote monitoring. The flexible design allows for any electric ignition and/or flame ionization combinations.

**EACH PILOT ASSEMBLY INCORPORATES** energized contacts for remote monitoring and a local "ON" status light with contacts for verifying signal strength. The Z-Star pilot operates equally well on virtually any fuel gas – natural gas, hydrogen, propane/butane – according to operator preference.



Z-STAR COMPONENTS

**OPERATING INFORMATION**

**Natural Gas**

- Pressure: 5-20 psig; normal operating pressure should be 10 psig at 80,000 Btu/hr
- Duty: 56,000 Btu/hr to 120,000 Btu/hr

**Propane**

- Pressure: 5-20 psig; normal operating pressure should be 5 psig at 80,000 Btu/hr
- Duty: 80,000 Btu/hr to 120,000 Btu/hr

**70% H<sub>2</sub> and 30% TNG**

- Pressure: 10-15 psig; normal operating pressure should be 13 psig at 80,000 Btu/hr
- Duty: 70,000 Btu/hr to 90,000 Btu/hr

**CONTACT JOHN ZINK TODAY TO LEARN HOW OUR Z-STAR PILOT CAN IMPROVE THE RELIABILITY AND PERFORMANCE OF YOUR SYSTEM.**

**U.S.  
CANADA**

John Zink Company, LLC

■ +1-918-234-1800  
+1-800-421-9242

**ASIA-PACIFIC**

John Zink Asia-Pacific,  
a division of Koch  
Asia-Pacific, Inc.

■ +81-3-4332-5550

**LATIN AMERICA**

Koch Technologia  
Química Ltda.

■ +55-11-3865-3571

**EUROPE  
MIDDLE EAST  
AFRICA**

John Zink Int.  
Luxembourg S.à r.l.

■ +352-518991

WWW.JOHNZINK.COM

INFO@JOHNZINK.COM

11920 East Apache, Tulsa, OK 74116  
Voice: +1-918-234-1800 • Fax: +1-918-234-2700  
info@johnzink.com

©2007 John Zink Company, LLC 07-2091